

The logo features the word "Lotusphere" in a bold, black, sans-serif font. The "o" in "sphere" is enclosed within a thick black circle. To the right of the word is a registered trademark symbol (®). Below the word "sphere" is the year "2008" in a similar bold, black, sans-serif font. The background consists of a blue gradient with a large yellow shape on the left and a series of thin, parallel lines in yellow and cyan that create a sense of motion and depth.

Lotusphere[®] 2008

BP204

Develop Virtually with VMware

Carl Tyler
Epilio

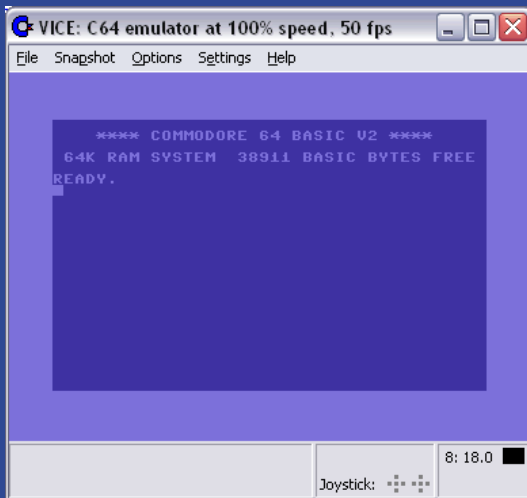


Agenda

- What is a Virtual Machine?
- Virtualization Options
- VMware Overview
- Why use a virtual environment?
- Clones and Snapshots
- VMware Teams
- Lotus Software Scenarios with VMware
- Getting Started

What is a Virtual machine?

- You may have previous experience...



Lotus software

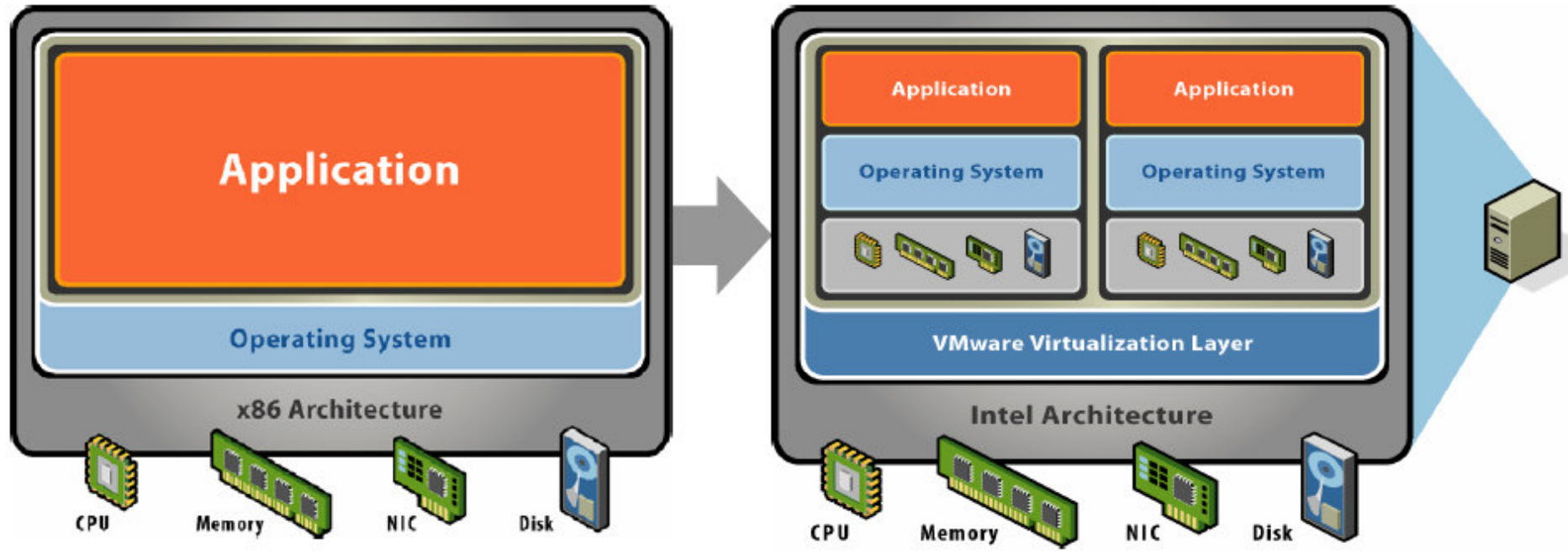
LotuspHERE 2008

Virtualization Options

- Microsoft Virtual PC
- Oracle VM (XEN)
- Parallels
- VMware
- XEN
- Many more



VMware Overview



- Hardware virtualization - a complete x86 platform
- Run multiple OS's on the same physical machine

Key VMware Versions

- VMware Player - Free
 - ▶ Run virtual machines on Windows or Linux
 - ▶ Intel based
- VMware Fusion - \$
 - ▶ Macintosh Version - Primarily intended to run Windows
 - ▶ Multiple Snapshots
- VMware Server – Free
 - ▶ Formerly GSX Server \$\$
 - ▶ Create and run virtual machines on Windows or Linux
 - ▶ Intel Based
 - ▶ Single Snapshot

Key VMware Versions

- VMware Workstation - \$
 - ▶ Create and run virtual machines on Windows or Linux
 - ▶ Intel Based
 - ▶ Multiple Snapshots
 - ▶ Multiple Monitors
 - ▶ Our focus for this session...
- VMware Infrastructure - \$\$\$\$
 - ▶ The motherload...
 - ▶ ESX Server
 - ▶ VMotion
 - ▶ Plus more...

Why use a virtual environment?

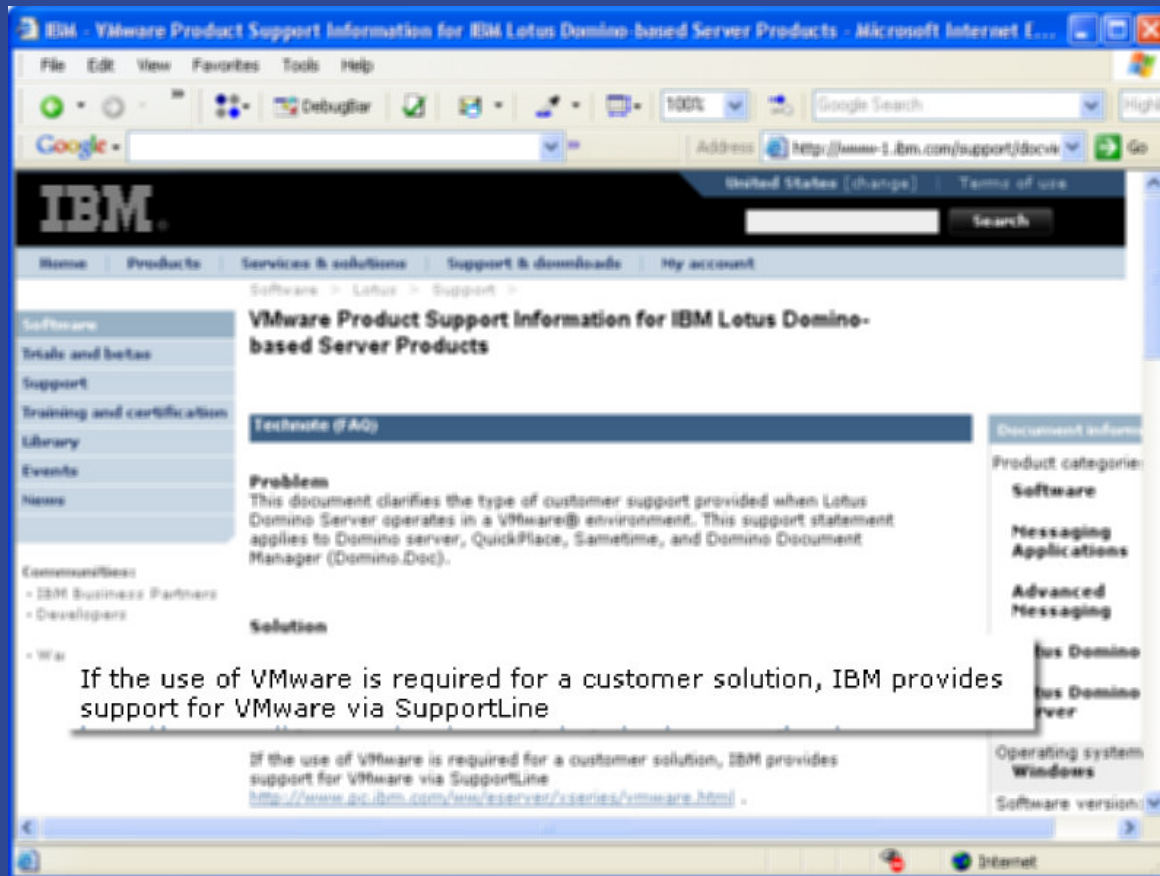
- Develop and test multiple Domino/Notes versions on a single PC
- Connect virtual machines to simulate and test multi-tier configurations
- Use multiple snapshots to facilitate testing
- Archive test environments on file servers where they can be easily restored/shared
- Less need to keep buying hardware or format clean machines

Why use a virtual machine? (Continued)

- Configure virtual machines to "undo" all changes at shutdown
- Demo complex or multi-tier configurations on a single laptop
- Test older Domino Server versions within virtual machines
- Crash a server and not impact other developers
- Test how applications perform with poor network connectivity

No 1 Reason ?

- It's supported!!!!



VMware Basics Demonstration

- Starting
- Stopping
- Switching
- Multiple OS's



Performance Tips #1

- Pre-Allocate Disk Space and install on a recently defragmented drive
- Install VM Tools
- Create VMs on a different partition to the Host OS/Swap file.
 - ▶ Can make sense to store VM images on fast external USB/Firewire/eSata drives
- Turn off hardware devices that are not required in the VM
 - ▶ USB ports, Sound Devices, Floppy Disks, CDs etc.



Clones, Templates and Snapshots

- Clones
 - ▶ Create identical duplicates
- Templates
 - ▶ Protect an image from changes
- Snapshots
 - ▶ Capture and manage point-in-time copies of a running virtual machine state



Meet the CLONE ranger

Clones

- Clone a VM to easily deploy many copies of a fully configured VM with OS and applications
- You can do anything with a clone that you could with the original VM
- Clones may be linked or full
 - ▶ Full Clone - independent copy, shares nothing with the parent after the cloning operation.
 - ▶ Linked Clone - a copy of a VM that shares virtual disks with the parent VM in an ongoing manner. Conserves disk space

Clones (Continued)

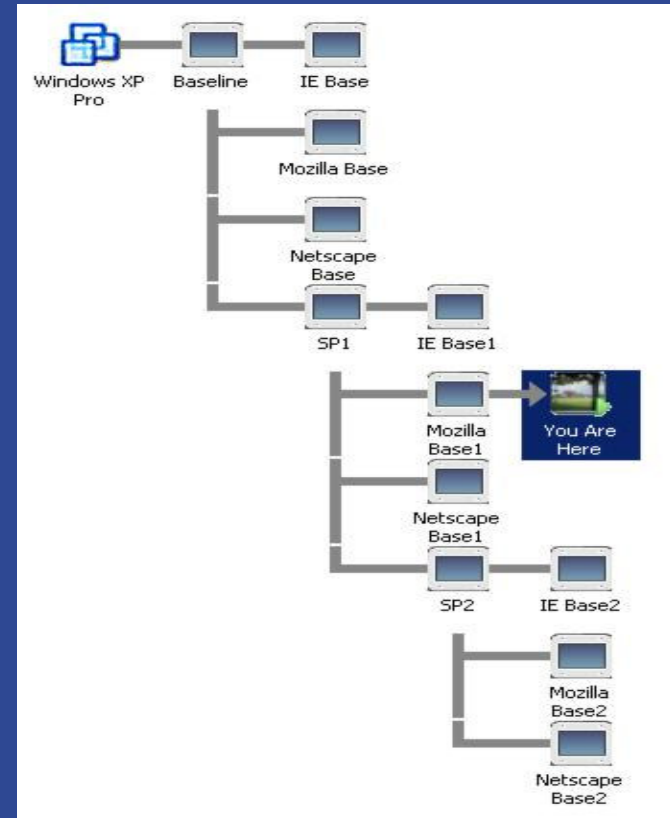
- The Clone virtual machine Wizard automatically copies all files and settings required
- The Clone virtual machine Wizard automatically creates a new MAC address and other unique identifiers for the duplicate virtual machine
 - ▶ To create a “true” clone with same MAC address etc. use OS File copy.

Templates

- Template mode ensures that users will not change the virtual machine
- Virtual machines used in linked clones should NOT be changed. When the virtual machine is in template mode, it cannot be deleted or added to a team, and the virtual machine's snapshots cannot be deleted.
- **Note:** To protect the template, set the file to read only or remove write permissions for the virtual machine's files. This precaution prevents inadvertently deleting a virtual machine through the file system, or from disabling template mode for a virtual machine

Snapshots

- Captures the entire state of the VM:
 - ▶ Memory state
 - ▶ Settings state
 - ▶ Disk state
- Return to it at any time.
- Facilitates repetitive testing and debugging



Clones and Snapshot Demonstration

- Creating a clone
- Avoiding conflicts
- Using Snapshots
- Reverting Snapshots



Performance Tips #2

- Defragment drives - inside to out before cloning or making templates
- Try and create snapshots to be a vertical tree as opposed to a horizontal one
- Create new VMs from physical machine backups using VMware Converter.



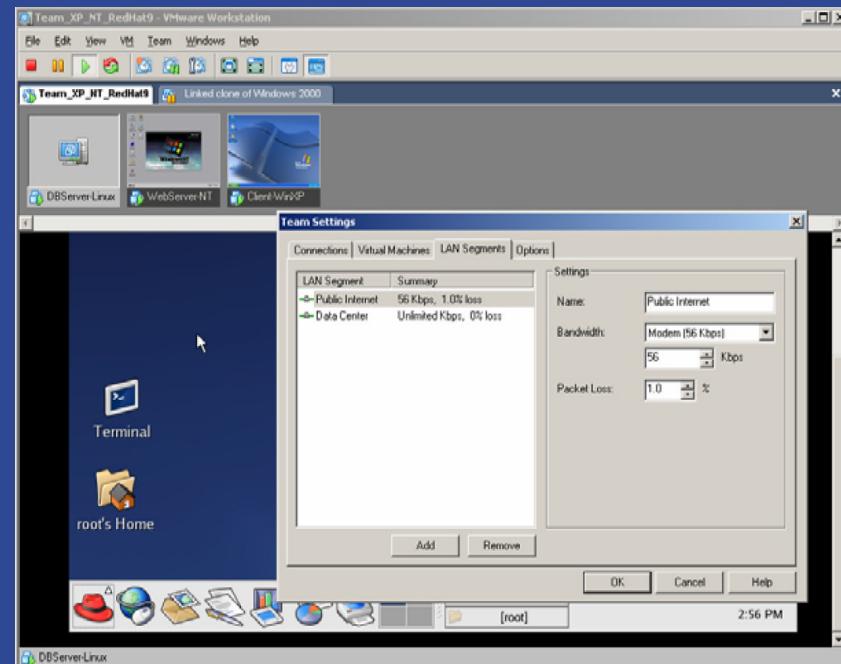
Teams

- Manage connected virtual machines
- Create “real world” network connections between virtual machines
- Perform power options across all the virtual machines in a Team



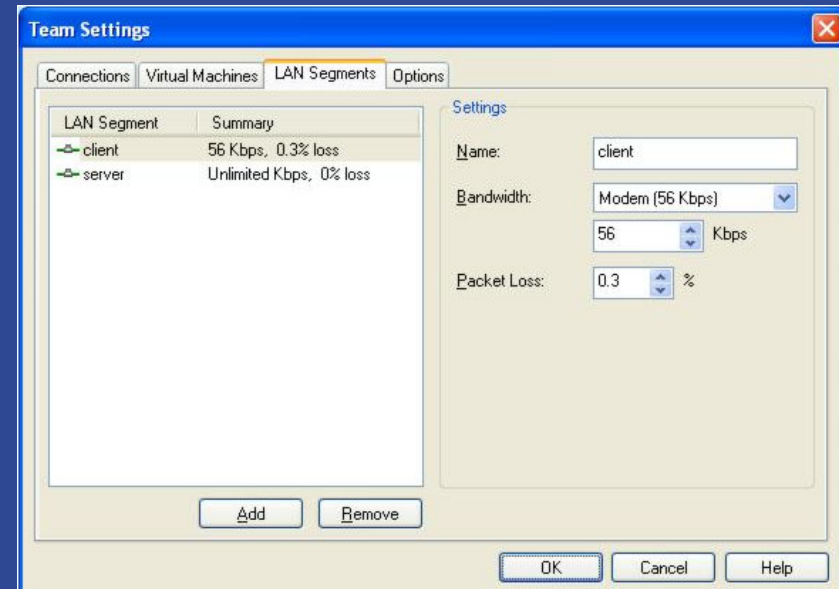
Teams (Continued)

- View all virtual machines on one screen
- Suspend and Resume
- Note: To take snapshots of multiple VMs requires a snapshot of each team member.



Teams and LAN Segments

- Bandwidth – Modify network bandwidth
- Packet Loss - specify the efficiency of the link
- Note: Settings become active for a given VM only after a power on, reset, or resume.



Lotus Software Scenarios with VMware

- Testing different Notes client versions
- Testing Domino apps on different Operating Systems
- Testing slow network connections between clients and servers
- Testing Cluster Failover

Teams Demonstration

- Creating a Team
- Adding VMs
- Starting/Stopping
- Changing Network Settings



Performance Tips #3

- Configure the VM to start with the CD/DVD optical drive disconnected
- Avoid running dual-processor VMs on a single-processor host
- If possible, run all the VMs RAM in real RAM, avoid swapping.



Getting Started

- VMware Player – Free!
 - ▶ Cannot build VMs but can use any VMware image and Microsoft Virtual PC and Symantec LiveState Recovery disk formats.
- VMware Server – Free!
 - ▶ Build VMs
 - ▶ Supports multiple processors
 - ▶ Supports Running as a service
- VMware Workstation - \$189

Getting Started (Continued)

- Virtual Appliance Marketplace
 - ▶ Certified
 - ▶ Production Ready
 - ▶ No Install
 - ▶ Instant on
- <http://vam.vmware.com>

Getting Started (Continued)

- Useful Resources

- ▶ IBM Redbooks

- <http://www.redbooks.ibm.com>

- ▶ VMware Blog

- <http://blogs.vmware.com>

- ▶ IBM Developer Works

- <http://www.ibm.com/developerworks/>

- ▶ VMware Virtual Appliance Marketplace

- <http://vam.vmware.com>

Feel free to contact me

- Blog
 - ▶ <http://www.iminstant.com>
- Company Website
 - ▶ <http://www.epilio.com>
- Email
 - ▶ CTylerLS@epilio.com
- Telephone
 - ▶ 1-866-9 EPILIO

