



## **Epilio Vonage Dialer for IBM Lotus Sametime**

Telephone: 1-866-9EPILIO

<http://www.epilio.com>

Last revision July 27, 2008

## Introduction

---

The Epilio Vonage Dialer for IBM Lotus Sametime is a free Sametime Connect Plug-in that Vonage account users can use to dial telephone numbers from within their Sametime client.

The plug-in was built using the Vonage Third Party Call Control, details of which can be found here:

<https://secure.click2callu.com/>

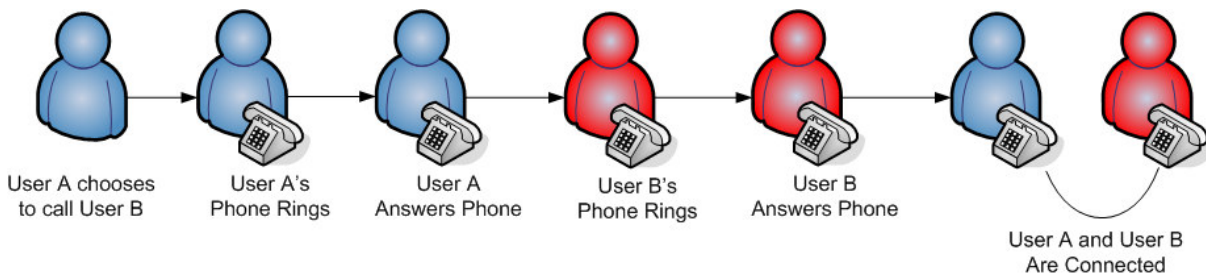
### Known Limitations:

The plug-in requires a Vonage telephone number and a Vonage account in good standing. The plugin, can only connect a users Vonage telephone number to another telephone number (can be a none Vonage number), it cannot initiate telephone calls from none Vonage telephone numbers.

The plug-in does not currently support proxies.

### How does it work?

The system works, by first dialing the Vonage telephone number, when that number is answered it dials the other parties number.

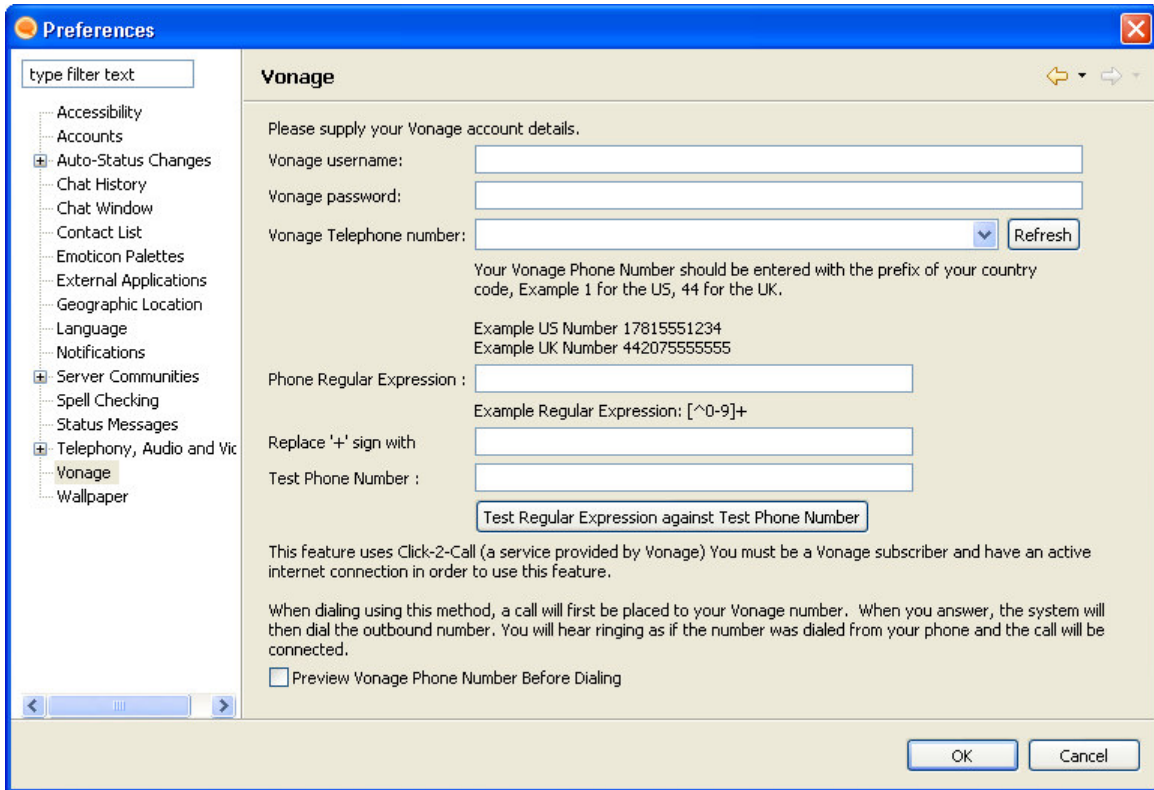


A movie demonstrating the Epilio Vonage Dialer in use can be found at:

<http://www.epilio.com/web/Vonage.htm>

## Configuration

After installing the Epilio Vonage Dialer plug-in, select File, Preferences, Vonage in the Sametime Connect Client. This will present the following dialog:



Complete each of the fields with the required information.

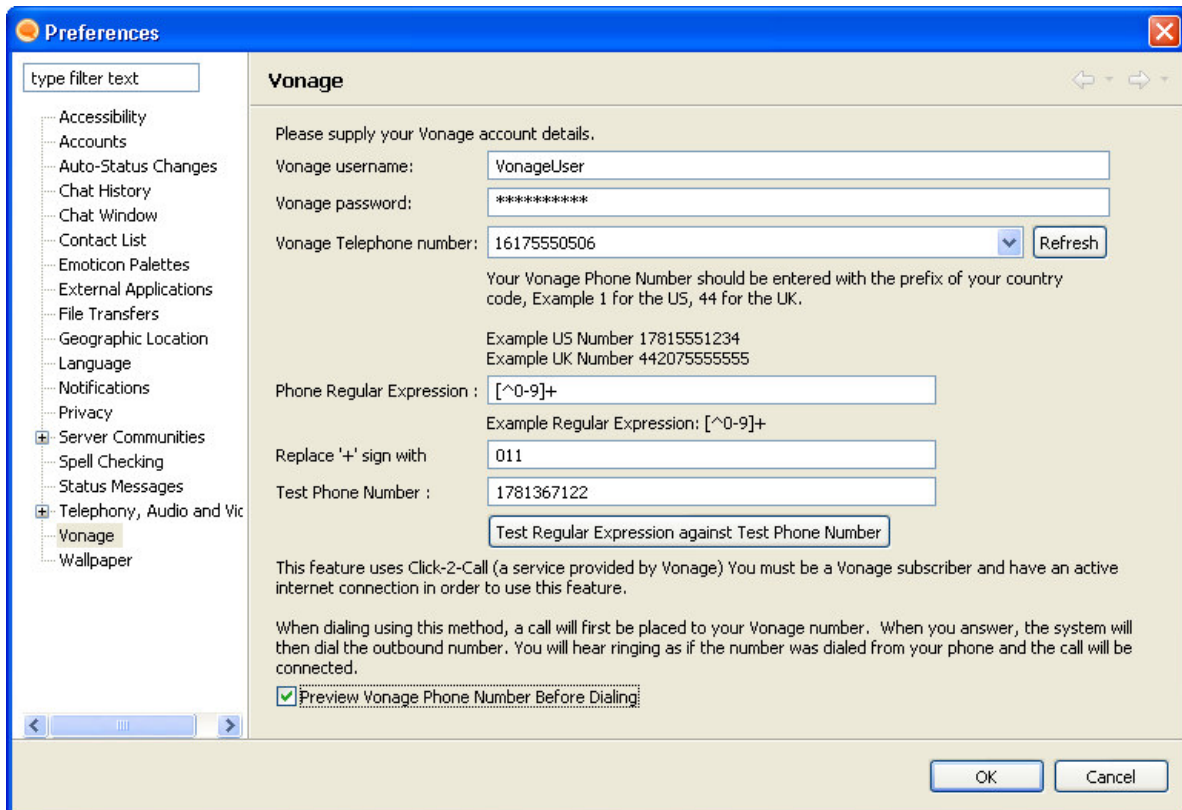
Field	Description
Vonage username	This is the username that is used to access the vonage.com website.
Vonage password	This is the password that is used to authenticate with the vonage.com website.
Vonage Telephone number	If you have entered, your vonage username and password, you can press the <b>Refresh</b> button and the drop down will contain the telephone numbers associated with your Vonage account.  <b>Note:</b> This is the telephone number that calls will be made from.
Phone Regular Expression	As users often have extra characters in their Sametime location telephone number for display reasons, we must remove those extra characters for the Vonage server to handle them correctly. You may enter a Regular Expression here to manipulate the number, and remove those extra characters.  To remove all extra characters you can use the expression: <b>[^0-9]+</b>  To learn more about regular expressions visit: <a href="http://www.regular-expressions.info/">http://www.regular-expressions.info/</a>

## Epilio Vonage Dialer for IBM Lotus Sametime

Field	Description
Replace '+' sign with	<p>If you are dialling international phone numbers, the Epilio Vonage Dialer needs to know the international dialling code prefix for your country. For the US, this number is <b>011</b></p> <p>Example, the number +44 207-224-2000 is the BBC in London. To dial the number from the US it would be: 01144 207-224-2000</p> <p>By using 011 as the replacement for + the number can be dialed by the Epilio Vonage Dialer.</p>
Test Phone Number	<p>If you want to see how your regular expression and the + replacement handle a number, enter the number into this field and press the "Test Regular Expression against Test Phone Number" button.</p> <p>A prompt will be displayed showing the processed number.</p>
Preview Vonage Phone Number Before Dialing	<p>We recommend using this option until you are sure that your regular expression is correct. By selecting this option, you will have the opportunity to modify the phone number to be dialed before the call is made.</p>

Once you have completed all the fields, press OK.

Here is an example of a completed Vonage Preferences page:



You can now make telephone calls! To place a call, select a user and use the right mouse button option "Call Vonage" or use the Call Vonage button in the Sametime toolbar.